



## OLFOSENSE®

### Environmental monitoring



Chemical  
defense

AIRSENSE Analytics and PCA Technologies have developed OlfoSense®, an Intelligent Sensor Array designed for monitoring odor leakages over large areas, at the perimeter of plants and at sources of emission.

OlfoSense® is a versatile device that can be used for urban air monitoring as well, putting you in constant touch with factors affecting public quality of life.

Waste Water treatment plants, chemical and petrochemical plants are of high impact and entail environmental risks; people often complain about odors, thus leading to an increased fear for public health. The OlfoSense network guarantees protection in such cases, where the Bureau of Environmental Protection can react immediately if thresholds are exceeded.

#### Technology

- 4 Metal Oxide Semiconductors (MOS)
- Photoionization Detector (PID)
- 2 Electrochemical Cells (ECD)
- Optical Particle Counter (OPC)

#### Parameters

- Odor concentration (OU/m<sup>3</sup>)
- Total VOC (Volatile Organic Compounds)
- NH<sub>3</sub> & H<sub>2</sub>S
- PM10, PM2.5, PM1



#### Key features

- Outdoor operation
- Continuous monitoring
- Wireless network
- Odor/VOC/NH<sub>3</sub>/H<sub>2</sub>S/PMx
- Dispersion modelling

In cooperation with



Via San Giovanni Bosco n.24  
20010 Pogliano Milanese (MI) - Italy  
Tel +39 02 83530792  
Fax +39 02 37927842  
info@pcatechnologies.com  
www.pcatechnologies.com



## OLFOSENSE®

### Environmental monitoring



#### Alarms

Whenever specific limits in concentration are to comply with, thresholds can be set within the device allowing owners of plants and Authorities to put in place corrective actions if an alarm triggers.

#### Monitoring parameters

Measurement time for cycle	> 30	sec.
Flush time for cycle	> 90	sec.
Number of cycles in sequence	infinite	

#### Detectors

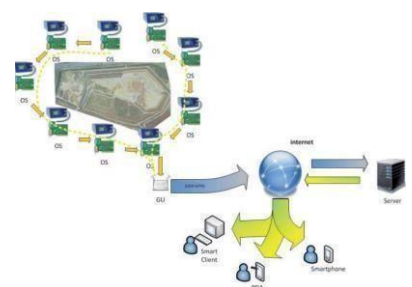
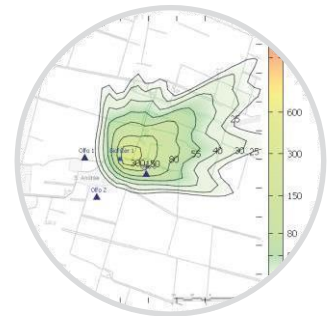
MOS Sensor Array	Each sensor works at specific temperature
VOC detector	PID 10.6 eV Detection range: 0 - 20 ppm
OPC detector	Optical Particle Counter Detection range (PM10): 0.01 µg/m <sup>3</sup> - 1 500 mg/m <sup>3</sup> .
H <sub>2</sub> S detector	Electrochemical cell – Detection range: 0 - 50 ppm
NH <sub>3</sub> detector	Electrochemical cell – Detection range: 0 - 100 ppm

#### Communications

Data transfer	UMTS ZigBee module (piloting external devices)
---------------	---

#### System Requirements

Operating system	Windows XP, Vista, Windows 7, Windows 10
Software	OlfoMuster software, OlfoClient platform, SMIT platform



Weight

17  
kg

Size

510x460x240  
mm

25W  
220V/50Hz